

WISHRM
State Council
Transitioning Back to Work
After COVID 19

Webinar

April 15, 2020

Please Note

Every attendee is on mute.

Attendees please turn webcams off.

Please use the Zoom Chat to interact with others & ask additional questions.

Webinar will be recorded.

Quick Review

Who is WISHRM?

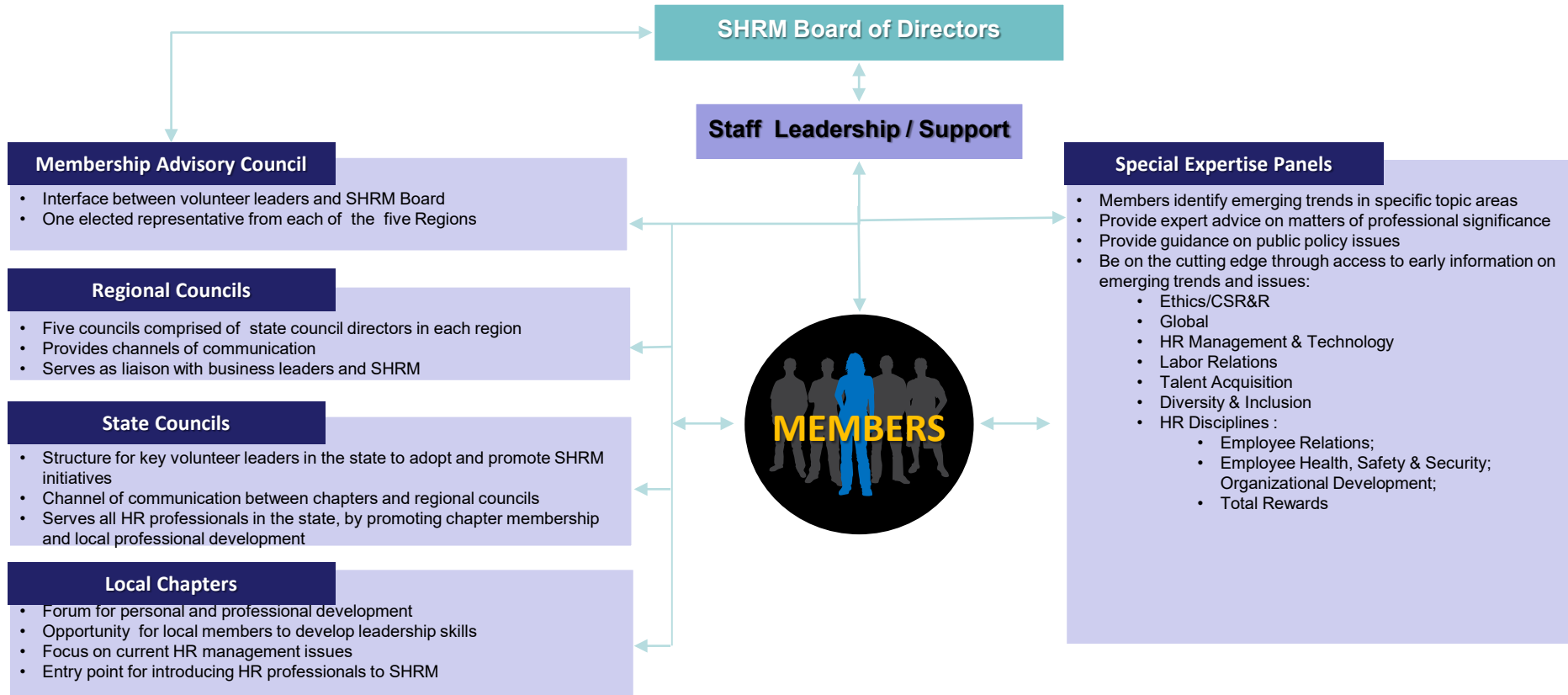


SHRM Volunteer Structure

(NETWORK OF CHAPTERS, STATE & REGIONAL COUNCILS & MAC)

SHRM Volunteer Structure

(NETWORK OF CHAPTERS, STATE & REGIONAL COUNCILS & MAC)



19 Affiliated WI Chapters

District Director NORTHWEST	District Director SOUTHWEST	District Director SOUTHEAST	District Director NORTHEAST	District Director NORTHCENTRAL
 <p>Kelsie Beckfield, SHRM-CP</p>	 <p>Jennifer Jirsa, SHRM-SCP, PHR</p>	 <p>Sheree Yates, SHRM-CP, PHR</p>	 <p>Jane Kurylo, SHRM-SCP, SPHR</p>	 <p>Jodi Wellhoefer, SHRM-CP, PHR</p>

Chippewa Valley

Blackhawk

Greater Madison Area

Fond du Lac

Central Wisconsin

LaCrosse

Dodge County

Metro Milwaukee

Green Bay

Fox Valley

St. Croix Valley

Jefferson County

Racine & Kenosha

Lakeshore

Oshkosh

West Central

Sauk Columbia

Sheboygan

Stevens Point

16 Student Chapters

- Blackhawk Technical College
- Lakeshore Technical College
- Western WI Technical College
- Marquette University
- Moraine Park Technical College
- St. Norbert College
- Waukesha County Technical College
- UW – Eau Claire
- UW – Green Bay
- UW – LaCrosse
- UW – Madison
- UW – Milwaukee
- UW – Oshkosh
- UW – Stevens Point
- UW – Stout
- UW – Whitewater

State Director
John Komosa

State Director-Elect
Jackie Peterson

Secretary
Melanie Bruins

Treasurer
Connie Bitter

District Directors (5)
Jodi Wellhoefer, Jane Kurylo, Kelsie Beckfield, Jennifer Jirsa, Sheree Yates

Conference Liaison Director
Janine Diana

Certification Director
Jay Stephany

Membership Director
Barbara Hamann

Government Affairs Director
Jeff Palkowski

Programming Director
Mary Vogl-Rauscher

Leadership Director
Rachael Brady

Workforce Readiness Director
Bob Von Der Linn

College Relations Director
Terleen Cheslock

Legislative Director
OPEN

Chapter Presidents (19)

Foundation Director
Jennifer Zahari

Communications Director
OPEN

Partnership/Sponsorship Director
OPEN

Diversity, Inclusion and Workflex Director
OPEN

Secretary Elect
OPEN

College Relations Dir. Elect
OPEN

Role of the State Council

- Adopt programs which will promote the progress and welfare of the profession and the Society as a whole
- Facilitate information sharing between chapters, among the council leaders, and the SHRM Board of Directors
- Provide a structure for its members to consult together
- Assess/meet the needs of members and chapters
- Coordinate legislative initiatives
- Provide leadership development opportunities
- Communicate with SHRM at-large members

Council Website

www.wishrm.org

- Conference web pages
- Job Network
- Calendar of Events
- Local Chapter websites
- WI SHRM Chapter Events page under “Chapters” tab on WISHRM.org
- And much more!



WISHRM Conferences / Events

- **State Conference 2020**
 - October 14th-16th, Kalahari Resort, WI Dells, WI
- **WISHRM Day on the Hill - 2021**
 - February 17th-18th, Madison, WI
 - Council meeting and attendee reception on the 17th
- **WISHRM Student HR Conference & Games 2021 - TBD**

Panelists



John Komosa, WI
SHRM State Director
and Total Rewards
Manager from Alliant
Energy



Jay Stephany, WI
SHRM Certification
Director and HR
Generalist for Network
Health



Brittany Hanson, Greater
Madison SHRM President
Elect and Talent Acquisition
Consultant for UW Credit
Union.

Disclaimer

- Your Panelists are experts in their field not attorney's. The information presented is not intended to be legal advice.
- Make sure to check ideas and actions against your company's policies.
- Questions will be answered through the lens "what will work best with my company and my company's culture".

Pre-Submitted Question #1

When the #StayatHome order is lifted, what will be your approach to returning to your pre-COVID-19 operations?

- **Do you have a timeline to have everyone back?**
- **What are you doing now to prepare employees to return to your buildings?**

Pre-Submitted Question #2

How can we make employees feel comfortable and safe when returning to work?

- **Are there any changes in operations/safety precautions that you are putting in place?**
- **What if someone does not want to come back into the workplace for fear that it is not safe to return yet?**
- **How are you working with your employees now to understand their concerns for safety?**

Pre-Submitted Question #3

How has your company approached talent acquisition and workforce planning during #StayatHome and what do you see happening moving forward?

Pre-Submitted Question #4

How do you think that companies will approach work at home options after #StayatHome?

Pre-Submitted Question #5

How is your company making plans now to come out of this even stronger than before.

Additional Questions – from the Zoom Chat

***Thank You to our Panelists &
Attendees***

**This webinar was recorded and a
link will be posted on
www.wishrm.org**