


AFFILIATE OF
SHRM
SOCIETY FOR HUMAN RESOURCE MANAGEMENT

State Council Orientation

"Developing Professionals
Serving the HR Profession"



WISCONSIN STATE COUNCIL
SHRM
SOCIETY FOR HUMAN RESOURCE MANAGEMENT

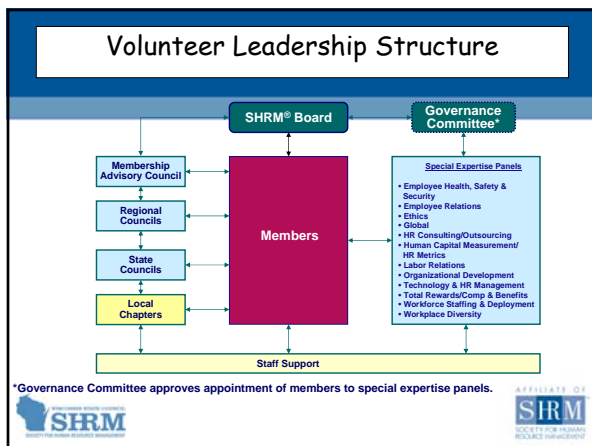
1

Vision Statements

- **SHRM**
 - Serve the Professional (STP)
 - Advance the Profession (ATP)

- **WI State Council**
 - Developing Professionals
 - Serving the HR Profession



Affiliated WI Chapters

- Blackhawk
- Central Wisconsin
- Chippewa Valley
- Dodge County
- Fond du lac
- Fox Valley
- Greater Madison
- Green Bay
- St. Croix
- HRMA
- Jefferson County
- La Crosse
- Lakeshore Area
- Sauk County
- Sheboygan
- Stevens Point
- Racine/Kenosha
- Tomah – In the works



Chapters provide:

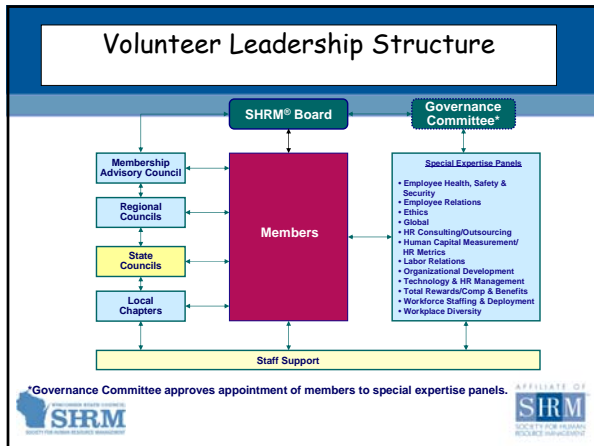
- a two-way channel of communication between SHRM and the individual member.
- a forum for the personal and professional development of its members.
- an opportunity to develop leadership, managerial, public speaking and group decision-making skills.



Chapters provide:

- an opportunity to focus on current human resource management issues of importance to its members.
- a focus for legislative attention to state and national human resource management issues.
- a local voice for the advancement of the HR profession.





- ### Mission Statement
- To be the recognized State Leader in HR management
 - To bring the Society closer to home
 - To add value to SHRM membership
- AFFILIATE OF
SOCIETY FOR HUMAN RESOURCE MANAGEMENT

- ### State Councils:
- provide a structure for its members to consult together concerning the affairs, activities, needs, and problems of the profession and the Society in the state.
 - adopt programs which will promote the progress and welfare of the profession and the Society as a whole.
 - facilitate information sharing between chapters, among the council leaders, and the SHRM Board of Directors.
- AFFILIATE OF
SOCIETY FOR HUMAN RESOURCE MANAGEMENT

State Councils:

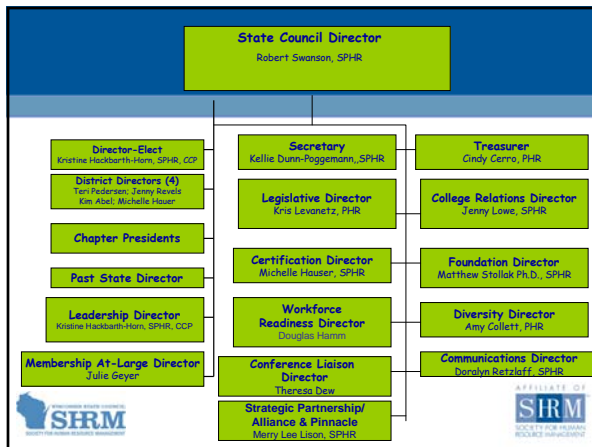
- assess the needs of members and chapters, and, then, meet those needs by securing and/or providing information, conferences and other leadership development opportunities.
- communicate with SHRM members within the state who are not affiliated with any specific chapter – at-large members.



State Councils:

- Take the lead on communications in the core leadership areas
 - SHRM Foundation
 - HRCI Certification
 - Diversity
 - Governmental Affairs
 - College Relations
 - Workforce Readiness
 - Membership





Positions Open for 2008

- 3 District Director Roles
- Foundation Director
- College Relations Director
- Governmental Affairs Director



Wisconsin "Stats" 6/30/08

- **Over 4,000** SHRM Members
 - **1,999** At-Large Members
 - **1,776** Members in Chapters
 - **20** student chapters



Wisconsin "Stats" 6/30/08

- **2,405** Certified Members
- **483** Federal Communications
- **86** State Communications
- SHRM Foundation donations
- **100% CAP** submission for 2007
- WI Superior Honor State Council



Council Tidbits

Committees

- Finance Committee
- Nominations Committee
- Diversity Advocate Award Selection Committee
- State Conference Planning Committee



Council Tidbits

Ad Hoc Committees/Project Work

- Executive Committee
- Website Analysis Committee
- Conference Selection Committee
- State Leadership Planning Committee
- Strategic Partnerships/Alliances



Association Management Firm

Morgan Data Solutions

Heather or Chris Dyer
WI SHRM-State Council Administration
2830 Agriculture Drive
Madison, WI 53718
Phone: 608-204-9827
Fax: 608-204-9818
wishrm@morgandata.com



Council Tidbits

- Affiliation Standards
- Membership list request
- Council Meeting participation
- Chapter Achievement Plans (CAP)
- Badger Bash
- Pay If You Pass Option




WI Conferences

- Student State Conference
 - February 22 and 23, 2008
 - Whitewater Host
- State Legislative Conference
 - April/May, 2008
 - Madison, WI
- Leadership Conference
 - August 7-8, 2008
 - Radisson Paper Valley Hotel
- State Conference
 - October 15 - 17, 2008
 - Green Bay, WI




Conference Web Page

www.wishrm.org



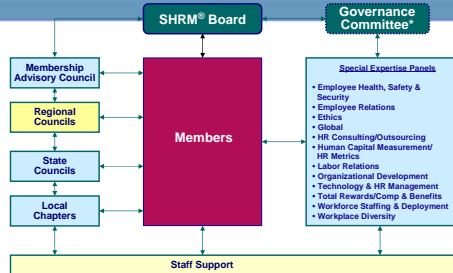


Final Council Tidbits

- Attendance at Council Events/Meetings
- Council communication
- HR Voice
- What to expect at council meetings?



Volunteer Leadership Structure



*Governance Committee approves appointment of members to special expertise panels.





Regional Map





North Central Region

- Illinois
- Indiana
- Iowa
- Michigan
- Minnesota
- Nebraska
- North Dakota
- Ohio
- South Dakota
- Wisconsin

North Central Region



- 10 states
- 151 professional chapters
- Over 38,000 SHRM members
- Over 11,000 non-SHRM members within chapter network
- Strong support of professional certification
- Strong support of HRVoice

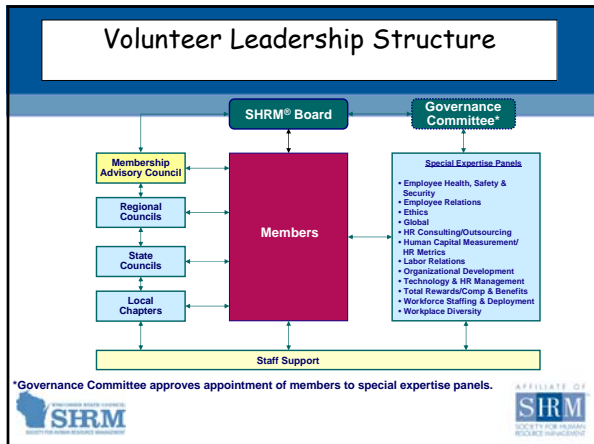



Regional Council

To provide an organized structure for state councils to:

- Share successful practices
- Provide input to SHRM (via the MAC)
- Serve as a communication channel on HR management issues
- Promote the purposes of and membership in SHRM



- ### Membership Advisory Council
- Board liaison for regional councils
 - Issues of the profession to the Board
 - Issues relating to volunteer leadership, services, etc. to SHRM President/CEO
 - MAC representative Tom Mobley from Ohio
- AFFILIATE OF
SHRM
SOCIETY FOR HUMAN RESOURCE MANAGEMENT

Questions?

AFFILIATE OF
SHRM
SOCIETY FOR HUMAN RESOURCE MANAGEMENT

30
